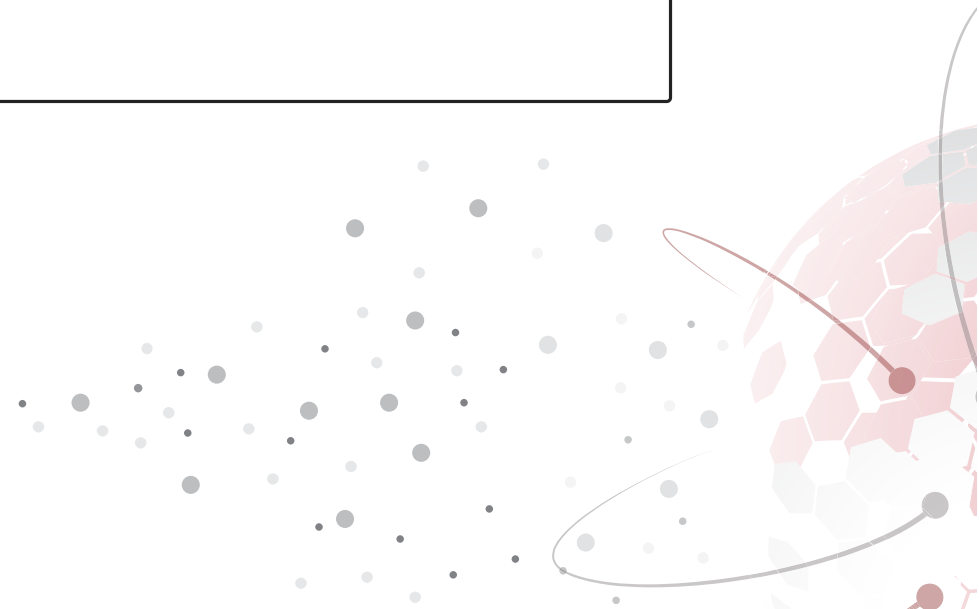


Index


- Key PEMEA Milestones and Roadmap
- EU - Key highlights of the PEMEA implementation
- Evolution





PEMEA Current Deployments and Evolution

MAIN MILESTONES AND ROADMAP



Sources	Phases	2016	2017	2018	2019	2020 H1	2020 H2	2021 H1	2021H2	2022H1	2022H2	2023H1
EENA/EU Projects	Specifications	Core Services		Multimedia Services			Supplementary Services					
EENA/EU Projects	Experimentations			Core Services		Multimedia S.			Supplementary Services			
ETSI EMTL	Standard					Core Services	Multimedia Services			Supplementary Services		
PSAP Live	First Implementations						Core Services	Multimedia Services			Supplementary Services	

- **Core Services:** Routing of communications and sharing of the caller's location and personal information
- **Multimedia Services:** Core Services + Messaging (Chat, RTT) + Video. Interop with SIP (Telco)
- **Supplementary Services:** Core Services + Multimedia Services + Public Alert + Internet of Things (wearables...)






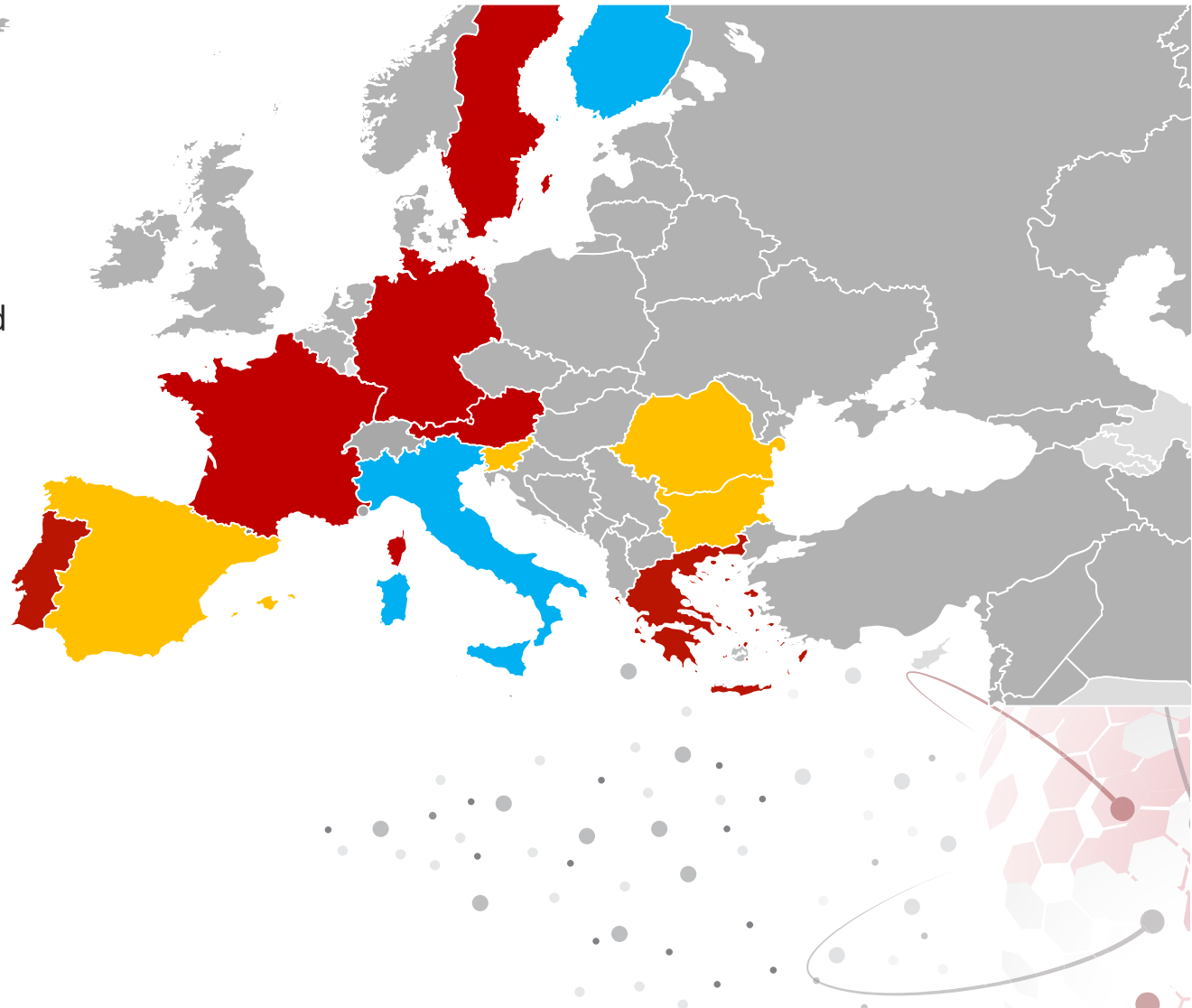
PEMEA Current Deployments and Evolution

DEPLOYMENT MAP AND EXPERIMENTS

By 2021, PEMEA deployments respond to the following needs:

- ✓ Improve service to inbound roaming users.
- ✓ Provide global accessibility through the use of Apps
- ✓ Enable connection via secure access of Internet Services and Applications (VoIP...)

-  Connected to PEMEA network
-  On Going and Planned Deployment
-  EU Projects





PEMEA Current Deployments and Evolution

ITALY - KEY HIGHLIGHTS OF THE PEMEA IMPLEMENTATION

Main Drivers:

- Ability to get the **accurate location information** from foreign visitors in Italy automatically.
- Allow the usage of the app in bordering countries (the Italian app is already translated in German, French and Slovenian, but doesn't work in those countries)

Background Situation :

- Apps : Where Are U – official 112 app for the Country.

Target Services and KEY Findings about implementation:

- **Core Services Project** was implemented on 3 months schedule – roaming works seamlessly with Finland
- **AREU – regional emergency services in Lombardy**, managing the access to PEMEA for the whole country.
- Hybrid cloud / on premise installation (ASP / PSP+AP)





PEMEA Current Deployments and Evolution

FINLAND - KEY HIGHLIGHTS OF THE PEMEA IMPLEMENTATION (JAN 2021)

Main Drivers:

- Ability to get the **accurate location information** from foreign visitors in Finland automatically.
- The person in need of help **can use their own App** to establish the emergency communication.
- Finnish people to **use their 112 Suomi App** when travelling to Europe.

Background Situation :

- Apps : Suomi 112 (> 1,6 M active download) since 2015
- PSAP : Nation Wide Service

Target Services and KEY Findings about implementation:

- **Core Services Project** was implemented on 3 months schedule – roaming works seamlessly with Italy (AREU)
- Remote installation within Finnish ERCA Datacenter
- Deployment procedure aligned with the latest virtualization and continuous deployment solutions on the market – made an easy implementation.



PEMEA Current Deployments and Evolution

ROMANIA - KEY HIGHLIGHTS OF THE PEMEA IMPLEMENTATION (ON GOING)

Main Drivers:

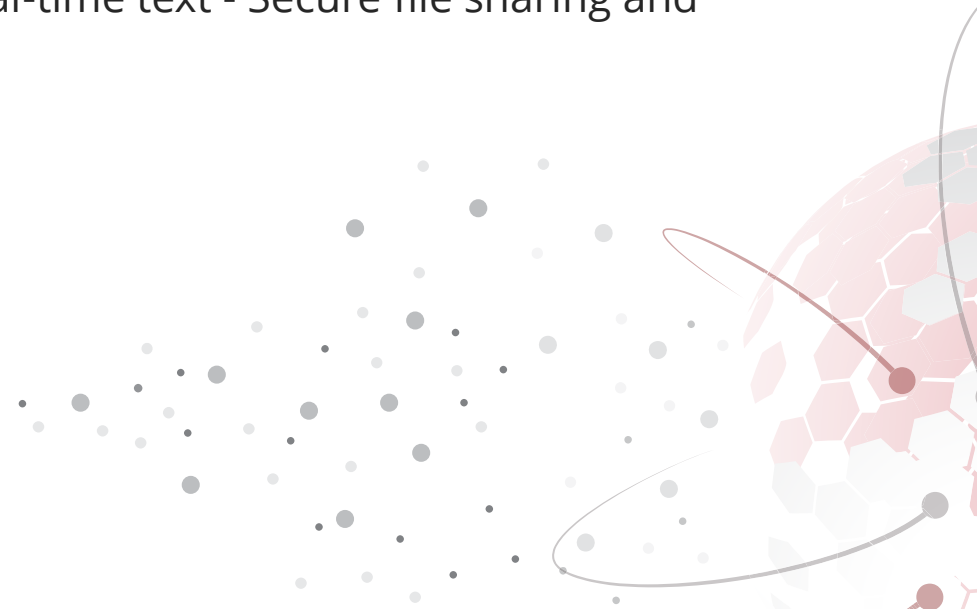
- Improve accessibility to 112 for the people with disabilities

Background Situation :

- Apps : building from scratch for the project
- PSAP : Interoperability NG112 – PEMEA / Shared Services

Target Services and KEY Findings about implementation:

- Advanced Web services providing PEMEA instant messaging and Real-time text - Secure file sharing and Pictogram (Picto-Chat)
- Audio Video communication using WebRTC
- Fast implementation and integration
- Comprehensive service integration improving caller experience





PEMEA Current Deployments and Evolution

SPAIN - KEY HIGHLIGHTS OF THE PEMEA IMPLEMENTATION (ON GOING)

- 4 Spanish regions are starting the PEMEA deployment from Q3 2021

Main Drivers:

- Be compliant with standard - ETSI TS 103 478 V1.1.1 (2018-03).
- Expand communication channels thanks to the incorporation of the multimedia channels offered by Apps: chat, RTT, video, audio, photo and file sharing

Background Situation :

- Apps : building from scratch for the projects plus make use of the most expanded one in Spain (My112)

Target Services and KEY Findings about implementation:

- Chat service (easy language translation service for tourists and visitors)
- WebRTC service (videoconferencing)
- SIP (integration with NG112 as specified by the ETSI standard).



PEMEA Current Deployments and Evolution

EVOLUTION

- Expand usage, specification and standardization of advanced capabilities
 - Publically available specifications for these features is expected in 3Q2021
- More information and preferred communication channel could be used in the future: Voice, chat, video, etc.
- Public alerts via PEMEA is under development with publically available specifications expected end of 4Q2021
- Next steps, aimed at full integration with Internet applications (TPSP) and IoT devices.

